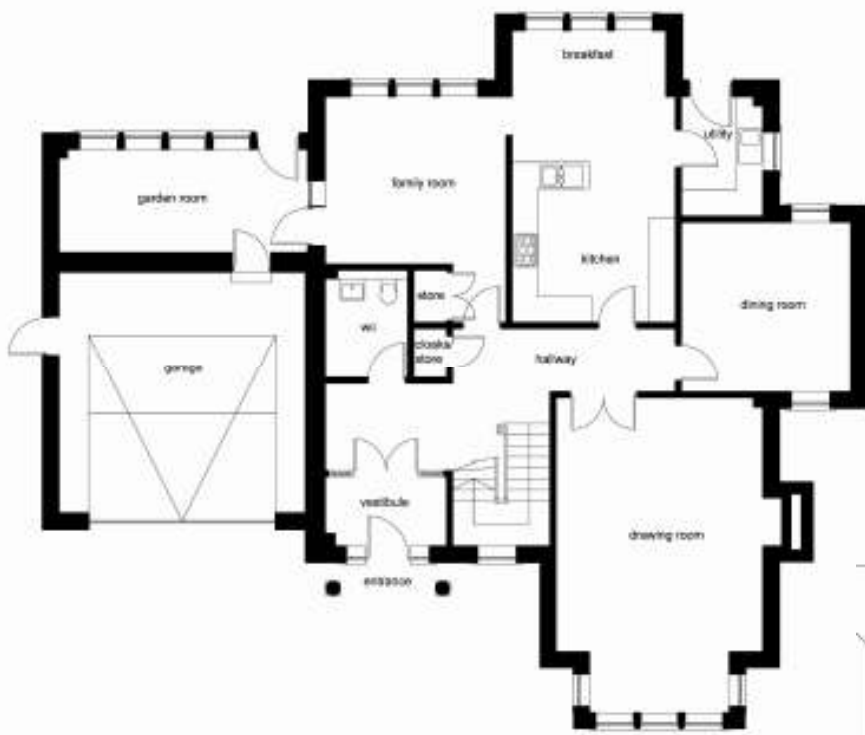


# The Mansions

AT CUNNING PARK, AYR



Stunning 4 bedroom villa, with garden room & integral garage.



GROUND FLOOR	Metric	Imperial
Kitchen/ breakfast	3732 x 6655	12'3" x 21'10"
Family Room	4132 x 3828	13'7" x 12'7"
Drawing Room	4720 x 7164	15'6" x 23'6"
Dining Room	3870 x 3920	12'8" x 12'10"
Garden Room	5672 x 2360	18'7" x 7'9"
Utility	1870 x 2735	6'2" x 9'0"
Vestibule	2781 x 1589	9'1" x 5'3"

FIRST FLOOR	Metric	Imperial
Master Bedroom	4720 x 3826	15'6" x 12'7"
Dressing 1	3186 x 2943	10'5" x 9'8"
En Suite 1	3382 x 3620	11'1" x 11'11"
Bedroom 2	4571 x 4377	15'0" x 14'4"
Dressing 2	2000 x 2056	6'7" x 6'9"
Ensuite 2	2453 x 2381	8'1" x 7'10"
Bedroom 3	3186 x 5662	10'5" x 18'7"
En Suite 3	2499 x 2531	8'2" x 8'4"
Bedroom 4	4049 x 3726	13'3" x 12'3"
Bathroom	2781 x 2882	9'1" x 9'5"
Sauna	1471 x 1250	4'10" x 4'2"



The information shown is intended as a preliminary guide only. Illustrations are provided as a guide indicating the style of the property. Room measurements are approximate only. The details contained in this document shall not constitute or form part of any contract.

.... an air of serenity and calm....